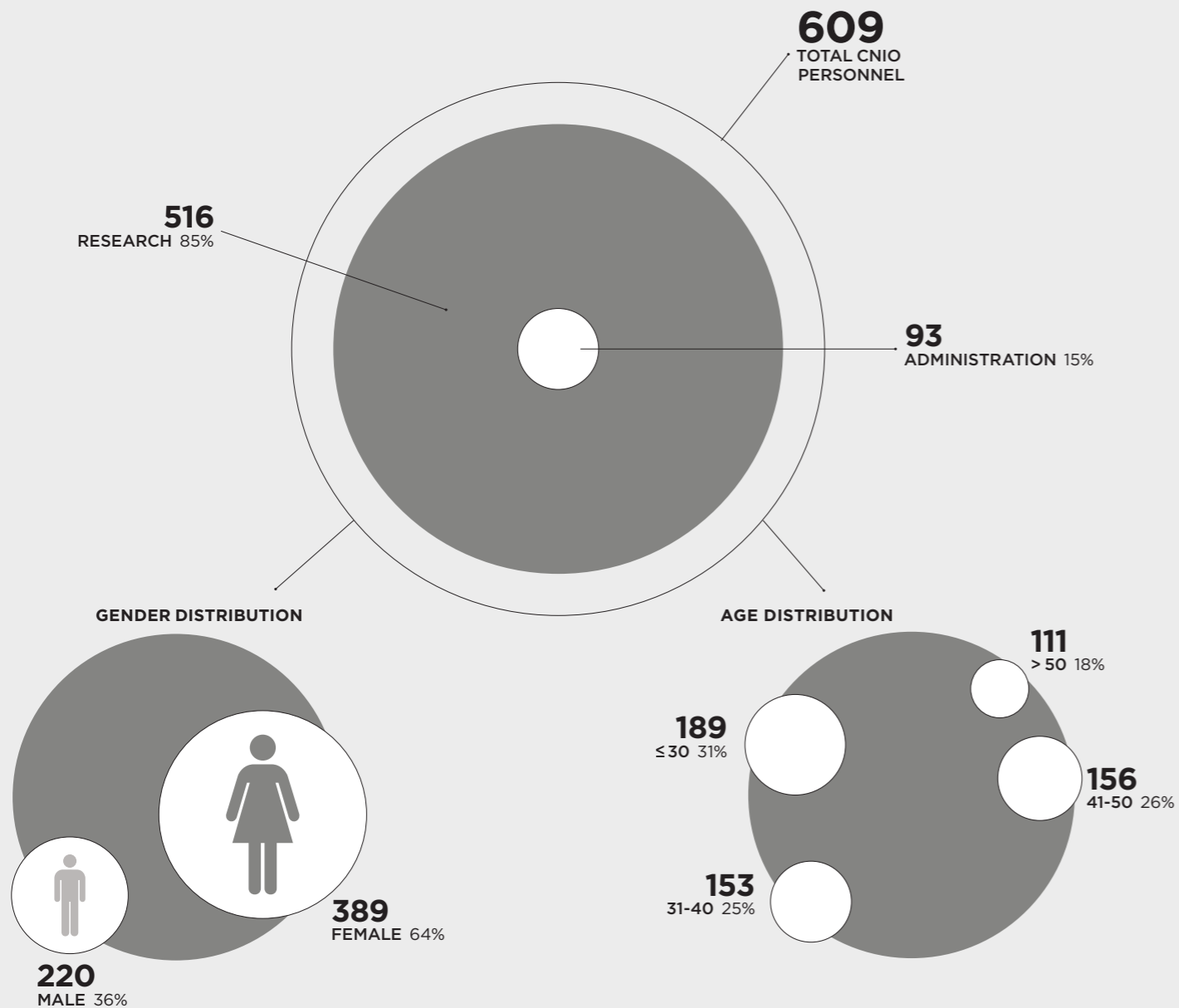


CNIO PERSONNEL 2022

SCIENTIFIC PERSONNEL 2022

TOTAL SCIENTIFIC PERSONNEL **516**



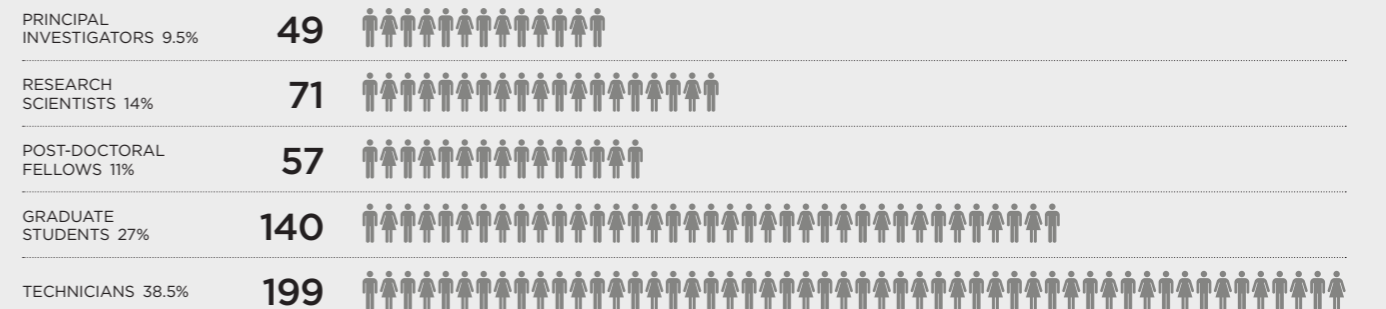
GENDER DISTRIBUTION IN SENIOR ACADEMIC AND MANAGEMENT POSITIONS

GROUP LEADERS, HEADS OF UNIT/SECTION	FEMALE 53%	25	MALE 47%	22
SCIENTIFIC DIRECTION: DIRECTORS, HEADS OF AREA	FEMALE 60%	9	MALE 40%	6
MANAGEMENT: DIRECTORS, HEADS OF AREA	FEMALE 31%	4	MALE 69%	9

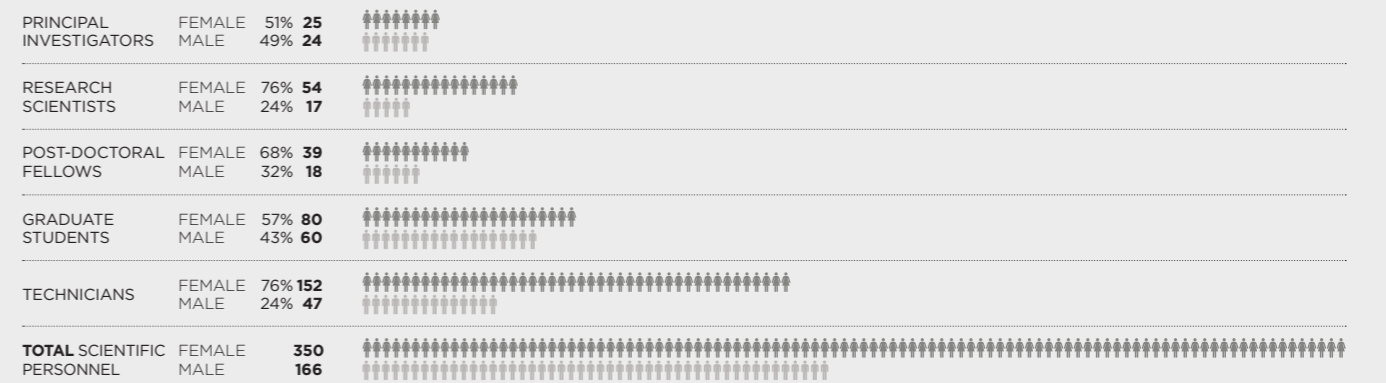
DISTRIBUTION BY PROGRAMMES



DISTRIBUTION BY PROFESSIONAL CATEGORY

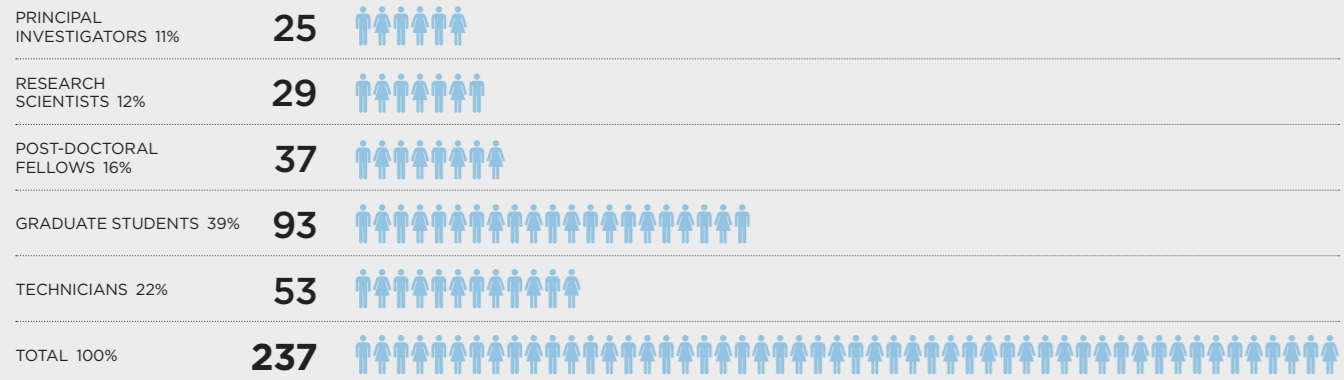


GENDER DISTRIBUTION BY PROFESSIONAL CATEGORY



DISTRIBUTION BY PROFESSIONAL CATEGORY IN: BASIC RESEARCH

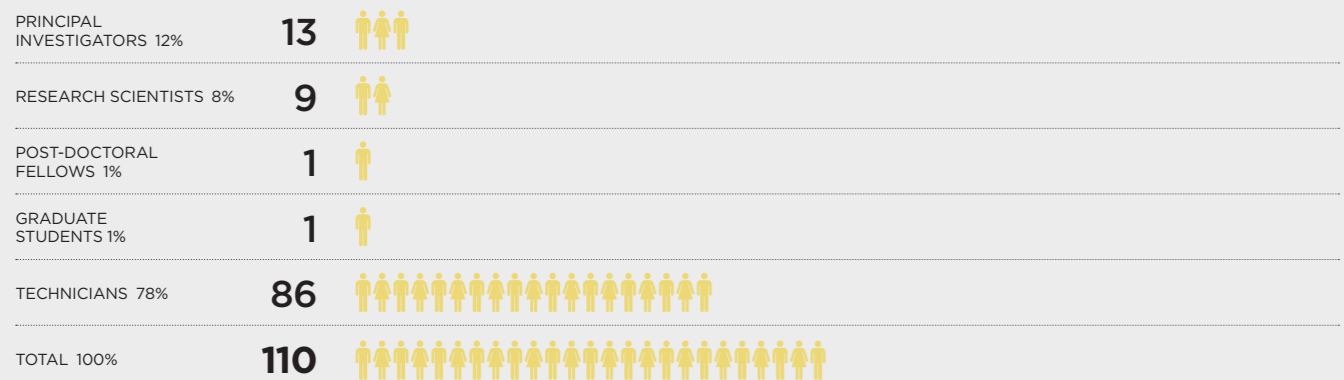
TOTAL SCIENTIFIC PERSONNEL **516**



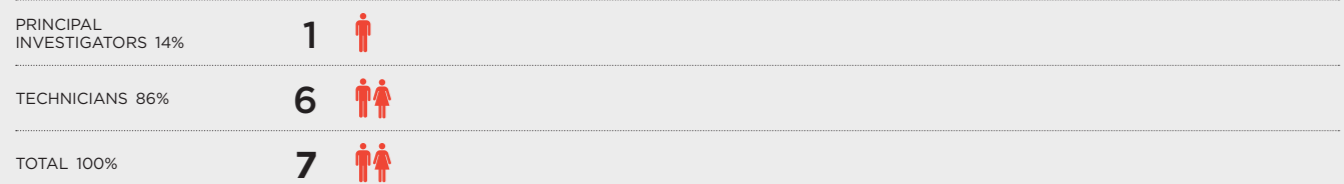
DISTRIBUTION BY PROFESSIONAL CATEGORY IN: TRANSLATIONAL RESEARCH



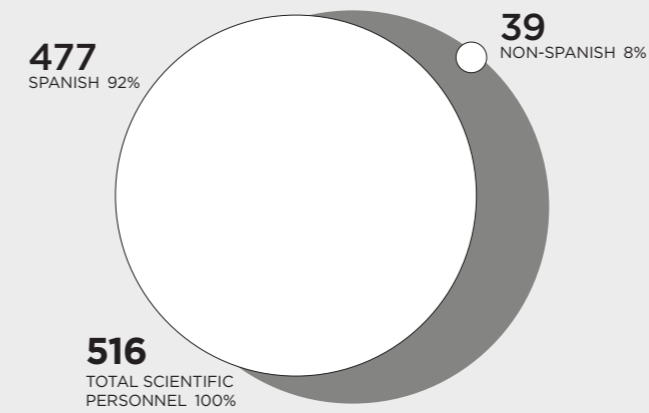
DISTRIBUTION BY PROFESSIONAL CATEGORY IN: INNOVATION



DISTRIBUTION BY PROFESSIONAL CATEGORY IN: BIOBANK



SCIENTIFIC PERSONNEL: NATIONAL ORIGIN



FOREIGN SCIENTIFIC PERSONNEL: DISTRIBUTION BY PROFESSIONAL CATEGORY



Total foreign scientific personnel 39
Percent values represent percentages of foreign employees of the total CNIO personnel within each category

DISTRIBUTION OF SCIENTIFIC PERSONNEL BY NATIONAL ORIGIN

