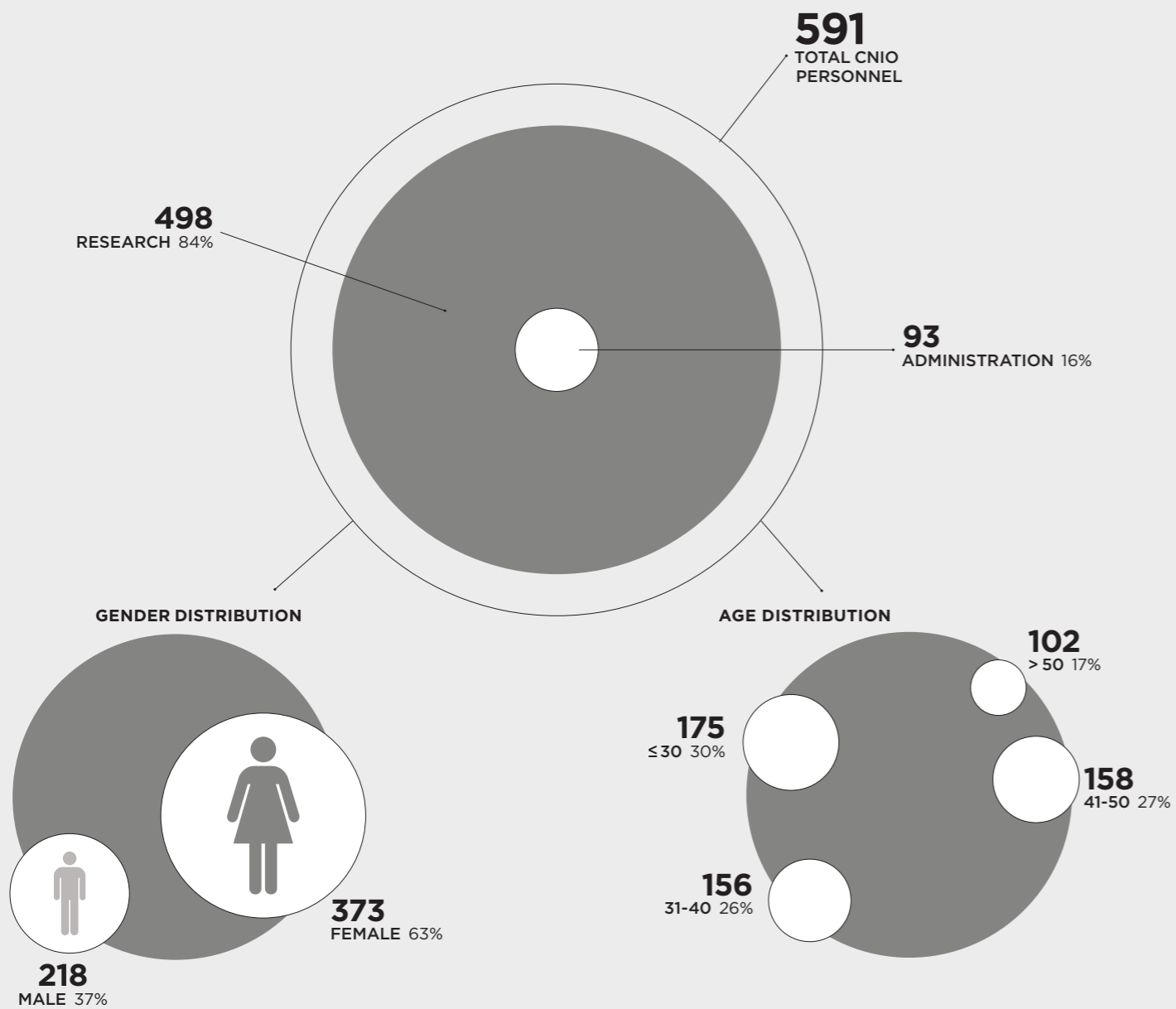


CNIO PERSONNEL 2021

SCIENTIFIC PERSONNEL 2021

TOTAL SCIENTIFIC PERSONNEL **498**



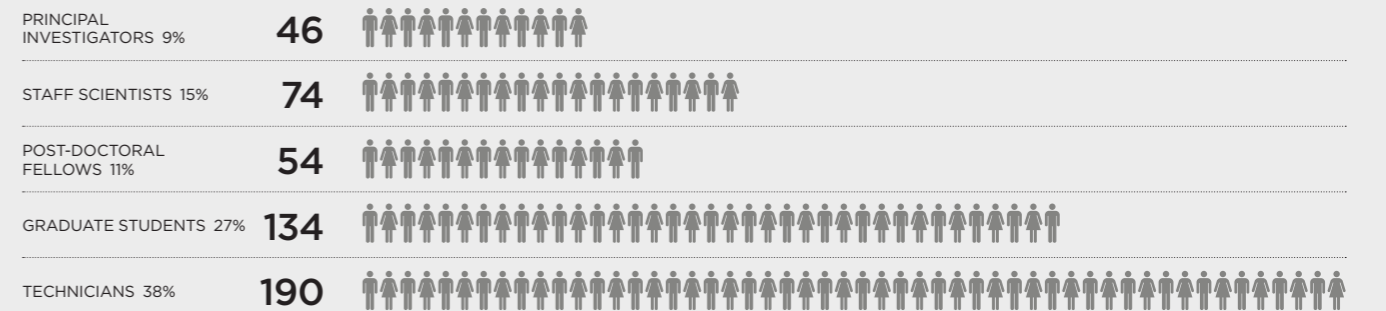
GENDER DISTRIBUTION IN SENIOR ACADEMIC AND MANAGEMENT POSITIONS

GROUP LEADERS, HEADS OF UNIT/SECTION	FEMALE 52%	23	MALE 48%	21
SCIENTIFIC DIRECTION: DIRECTORS, HEADS OF AREA	FEMALE 65%	11	MALE 35%	6
MANAGEMENT: DIRECTORS, HEADS OF AREA	FEMALE 29%	4	MALE 71%	10

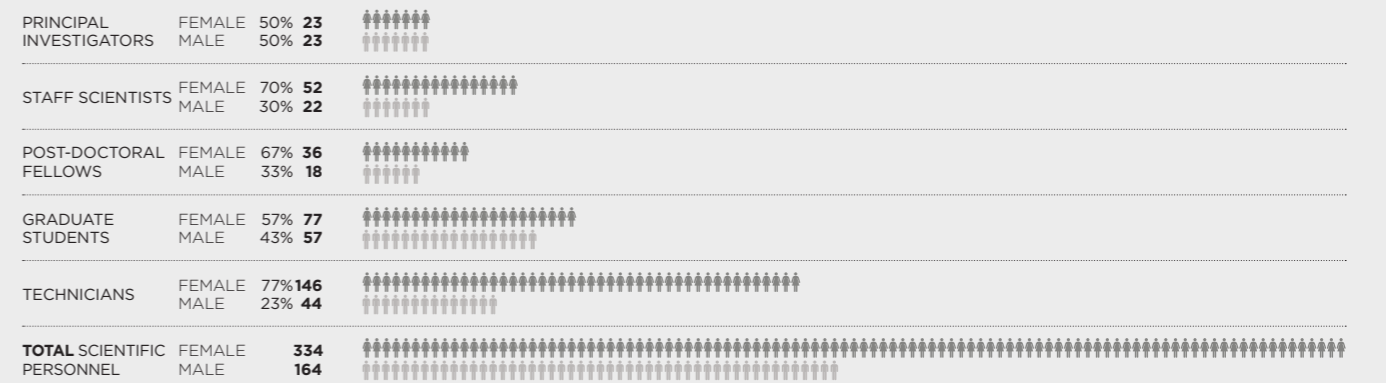
DISTRIBUTION BY PROGRAMMES



DISTRIBUTION BY PROFESSIONAL CATEGORY

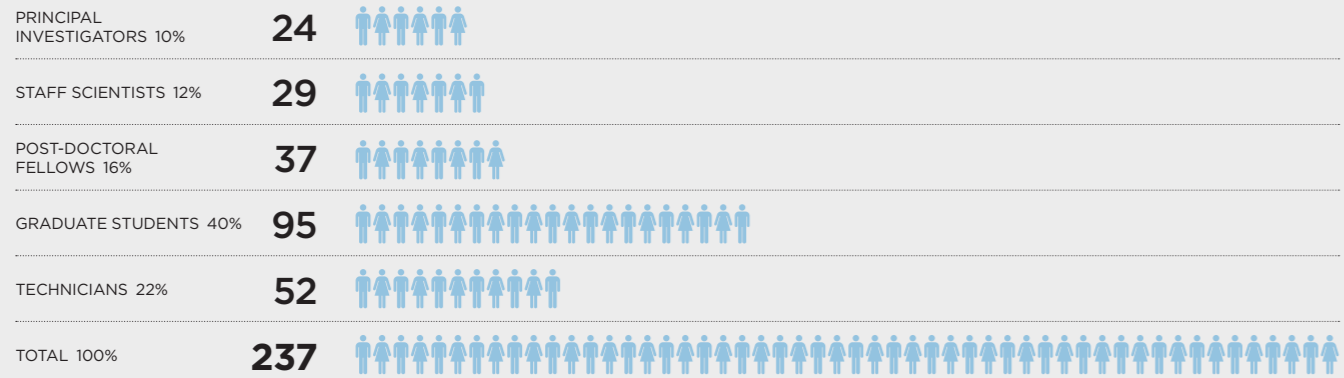


GENDER DISTRIBUTION BY PROFESSIONAL CATEGORY



**DISTRIBUTION BY PROFESSIONAL CATEGORY IN: BASIC RESEARCH**

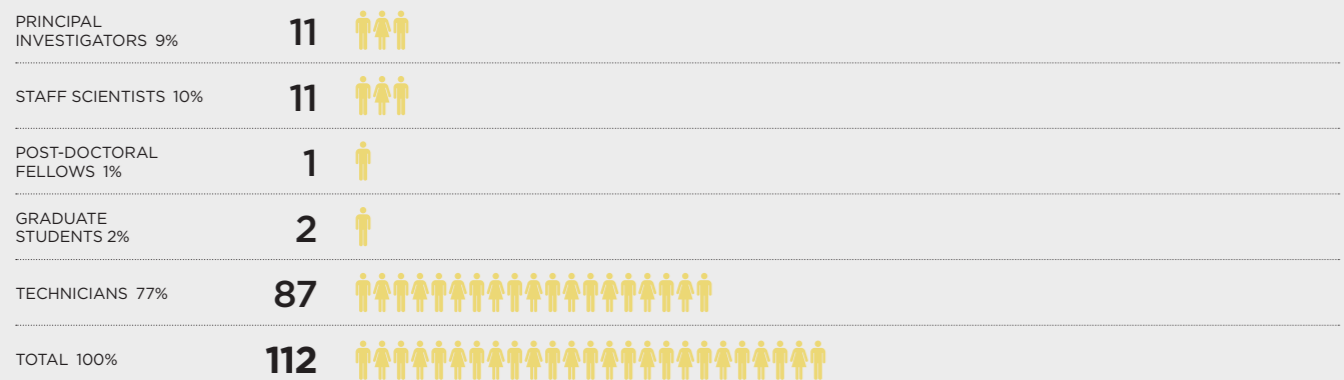
TOTAL SCIENTIFIC PERSONNEL **498**



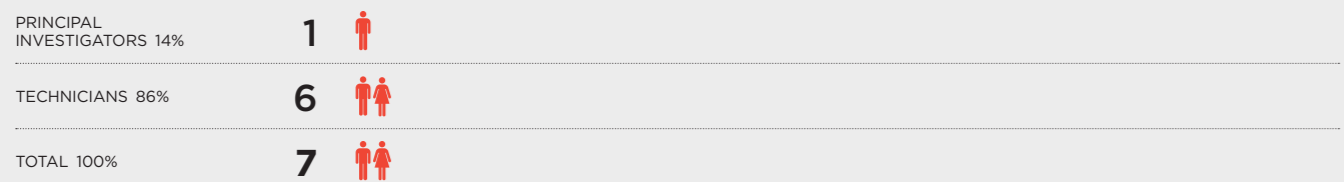
**DISTRIBUTION BY PROFESSIONAL CATEGORY IN: TRANSLATIONAL RESEARCH**



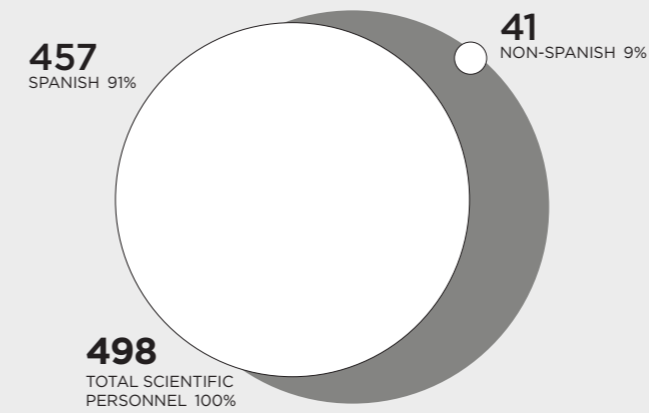
**DISTRIBUTION BY PROFESSIONAL CATEGORY IN: INNOVATION**



**DISTRIBUTION BY PROFESSIONAL CATEGORY IN: BIOBANK**



**SCIENTIFIC PERSONNEL: NATIONAL ORIGIN**



**FOREIGN SCIENTIFIC PERSONNEL: DISTRIBUTION BY PROFESSIONAL CATEGORY**



**Total foreign scientific personnel 41**  
Percent values represent percentages of foreign employees of the total CNIO personnel within each category

**DISTRIBUTION OF SCIENTIFIC PERSONNEL BY NATIONAL ORIGIN**

