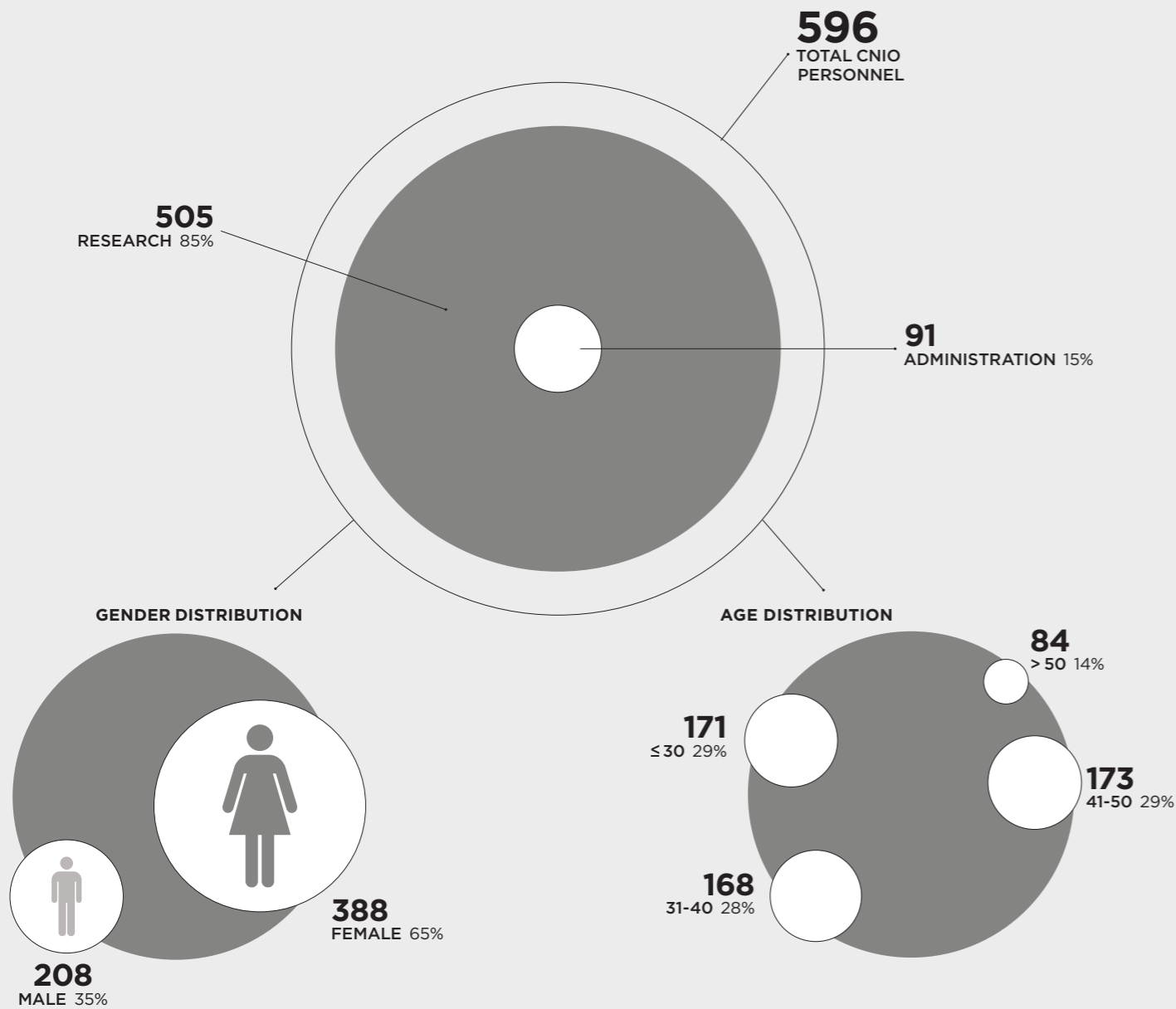


CNIO PERSONNEL 2020

SCIENTIFIC PERSONNEL 2020

TOTAL SCIENTIFIC PERSONNEL **505**



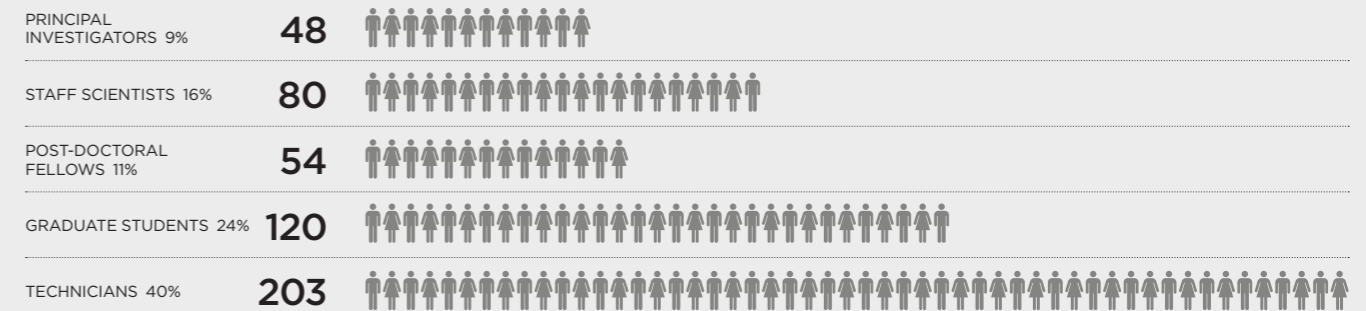
GENDER DISTRIBUTION IN SENIOR ACADEMIC AND MANAGEMENT POSITIONS

Position	Female	Male
GROUP LEADERS, HEADS OF UNIT/SECTION	46% 21	54% 25
SCIENTIFIC DIRECTION: DIRECTORS, HEADS OF AREA	67% 10	33% 5
MANAGEMENT: DIRECTORS, HEADS OF AREA	29% 4	71% 10

DISTRIBUTION BY PROGRAMMES



DISTRIBUTION BY PROFESSIONAL CATEGORY

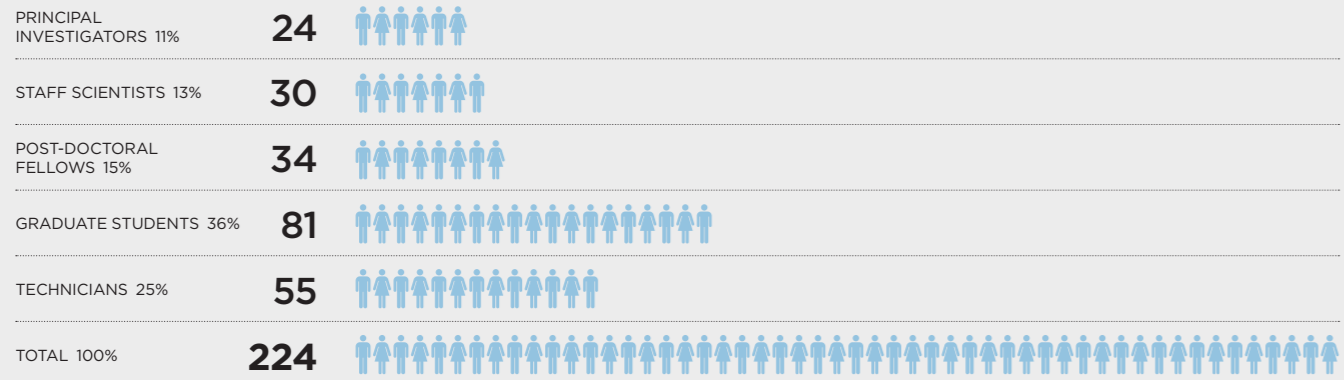


GENDER DISTRIBUTION BY PROFESSIONAL CATEGORY

PRINCIPAL INVESTIGATORS	FEMALE 44% 21	MALE 56% 27
STAFF SCIENTISTS	FEMALE 70% 56	MALE 30% 24
POST-DOCTORAL FELLOWS	FEMALE 69% 37	MALE 31% 17
GRADUATE STUDENTS	FEMALE 62% 74	MALE 38% 46
TECHNICIANS	FEMALE 76% 155	MALE 24% 48
TOTAL SCIENTIFIC PERSONNEL	FEMALE 343	MALE 162

DISTRIBUTION BY PROFESSIONAL CATEGORY IN: BASIC RESEARCH

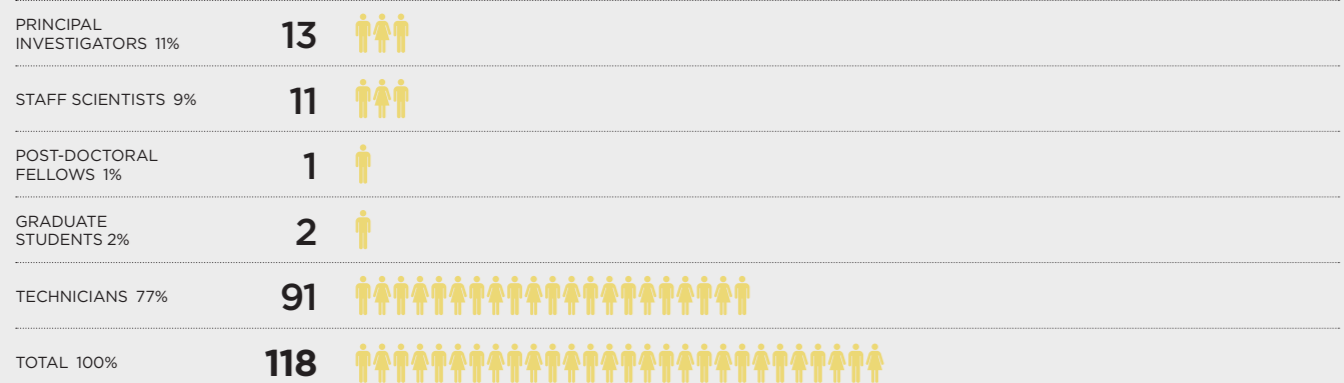
TOTAL SCIENTIFIC PERSONNEL **505**



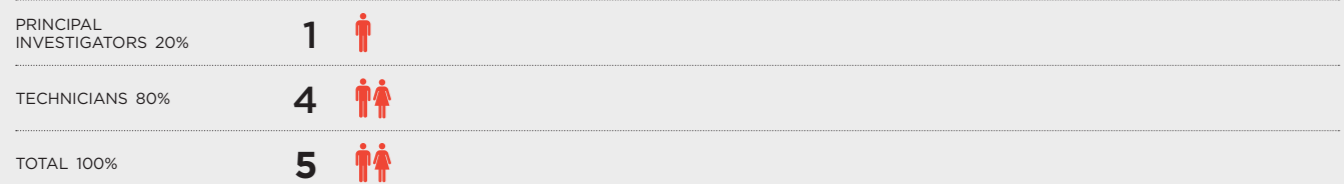
DISTRIBUTION BY PROFESSIONAL CATEGORY IN: TRANSLATIONAL RESEARCH



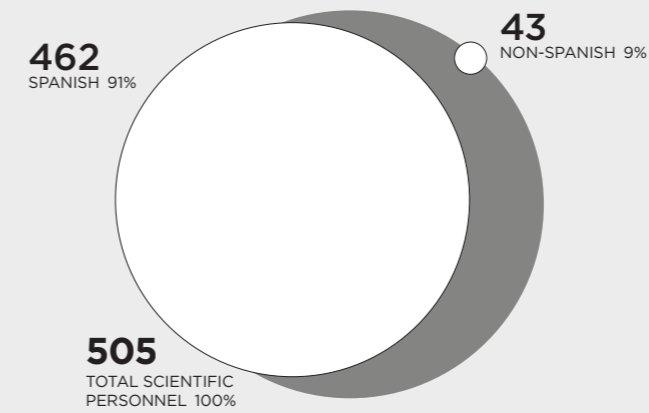
DISTRIBUTION BY PROFESSIONAL CATEGORY IN: INNOVATION



DISTRIBUTION BY PROFESSIONAL CATEGORY IN: BIOBANK



SCIENTIFIC PERSONNEL: NATIONAL ORIGIN



FOREIGN SCIENTIFIC PERSONNEL: DISTRIBUTION BY PROFESSIONAL CATEGORY



Total foreign scientific personnel 43
Percent values represent percentages of foreign employees of the total CNIO personnel within each category

DISTRIBUTION OF SCIENTIFIC PERSONNEL BY NATIONAL ORIGIN

