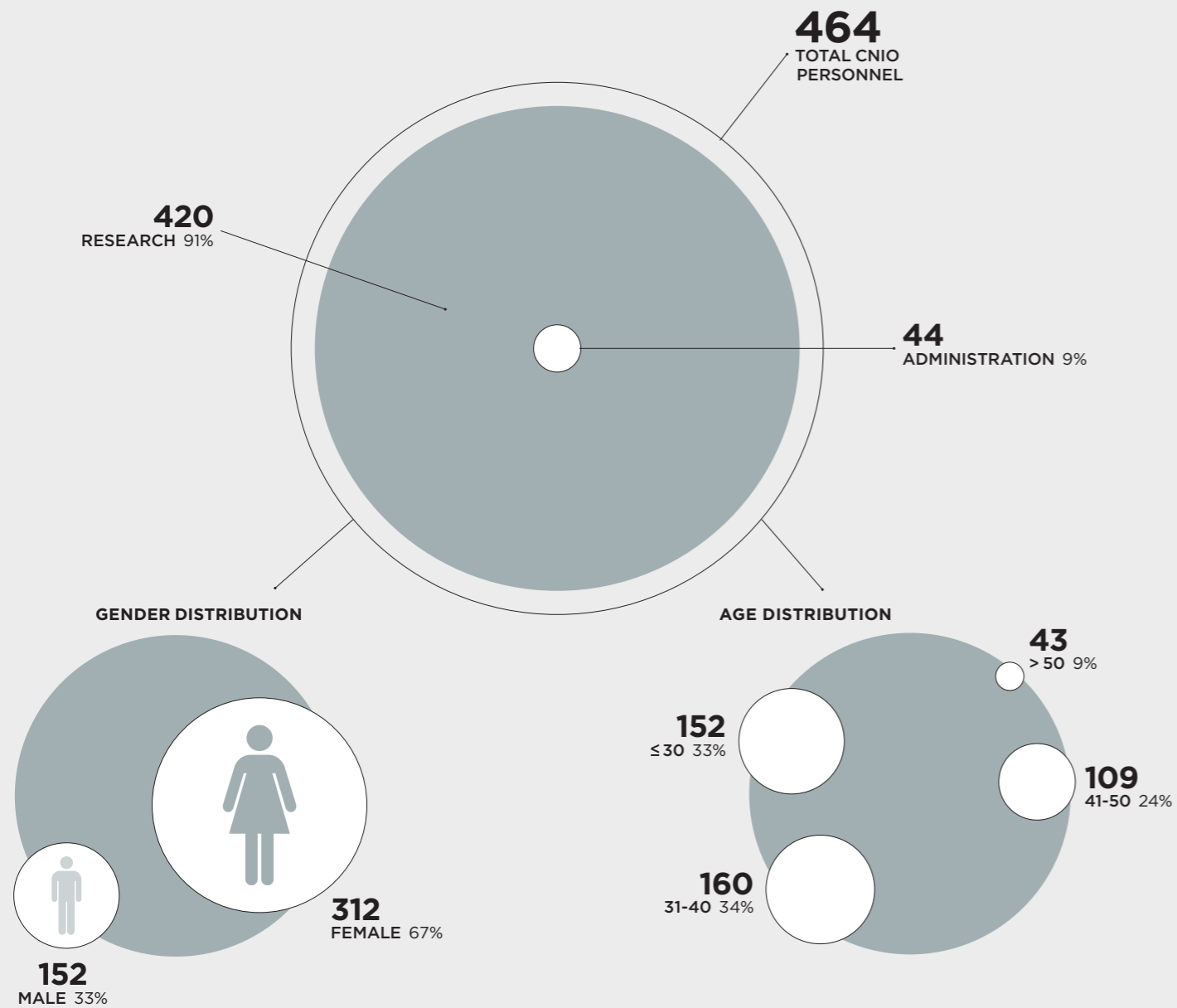


CNIO PERSONNEL 2016

SCIENTIFIC PERSONNEL 2016

TOTAL SCIENTIFIC PERSONNEL **420**



GENDER DISTRIBUTION IN SENIOR ACADEMIC AND MANAGEMENT POSITIONS

Position	Female	Male
GROUP LEADERS, HEADS OF CLINICAL RESEARCH UNIT/SECTION	32% 10	68% 21
HEADS OF UNIT/BIOBANK	53% 10	47% 9
SCIENTIFIC DIRECTION: DIRECTORS, HEADS OF AREA	50% 7	50% 7
MANAGEMENT: DIRECTORS, HEADS OF AREA	33% 4	67% 8

DISTRIBUTION BY PROGRAMMES

STRUCTURAL BIOLOGY AND BIOCOMPUTING 10%	44
BIOTECHNOLOGY 11%	47
CANCER CELL BIOLOGY 10%	40
HUMAN CANCER GENETICS 12%	51
CLINICAL RESEARCH 18%	75
MOLECULAR ONCOLOGY 30%	127
EXPERIMENTAL THERAPEUTICS 9%	36

DISTRIBUTION BY PROFESSIONAL CATEGORY

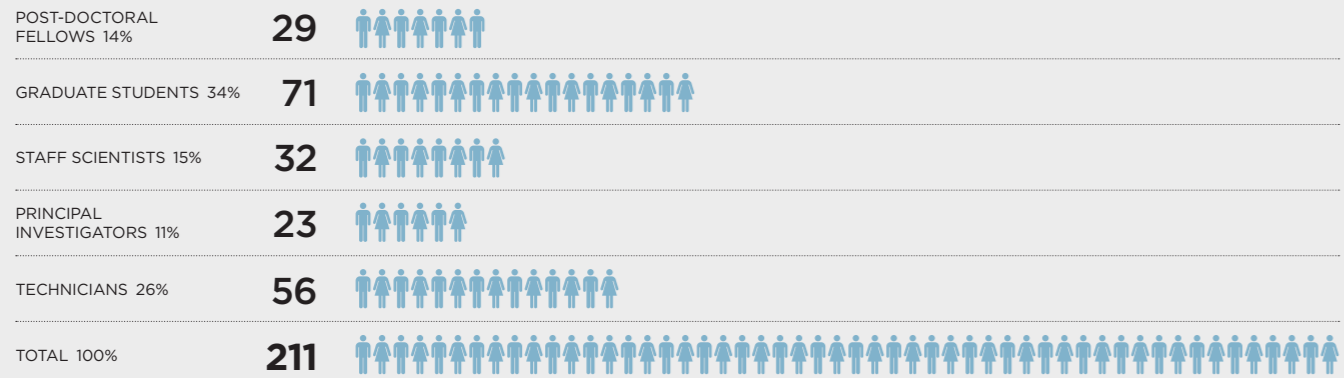
POST-DOCTORAL FELLOWS 10%	43
GRADUATE STUDENTS 25%	104
STAFF SCIENTISTS 17%	72
PRINCIPAL INVESTIGATORS 12%	50
TECHNICIANS 36%	151

GENDER DISTRIBUTION BY PROFESSIONAL CATEGORY

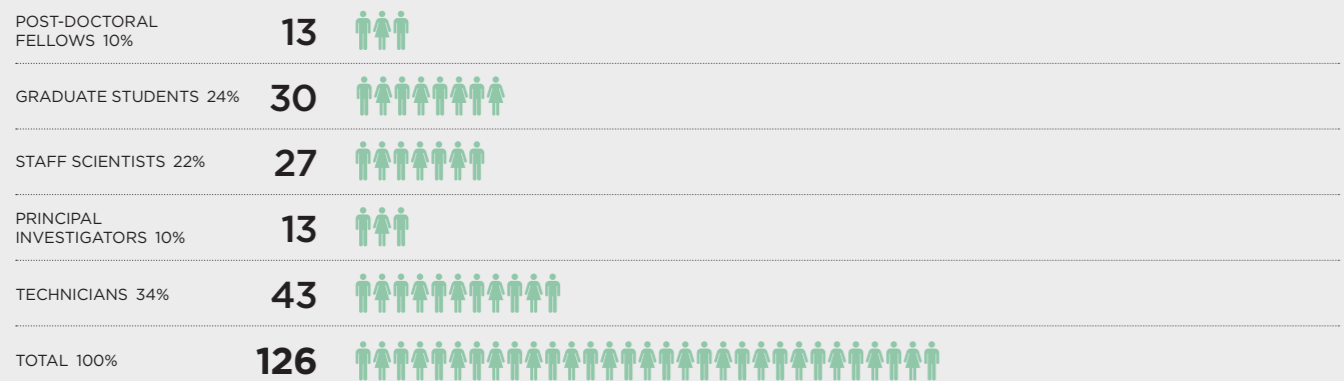
POST-DOCTORAL FELLOWS	FEMALE 67% 29	MALE 33% 14
GRADUATE STUDENTS	FEMALE 70% 73	MALE 30% 31
STAFF SCIENTISTS	FEMALE 71% 51	MALE 29% 21
PRINCIPAL INVESTIGATORS	FEMALE 38% 19	MALE 62% 31
TECHNICIANS	FEMALE 74% 111	MALE 26% 40
TOTAL SCIENTIFIC PERSONNEL	FEMALE 283	MALE 137

DISTRIBUTION BY PROFESSIONAL CATEGORY IN: BASIC RESEARCH

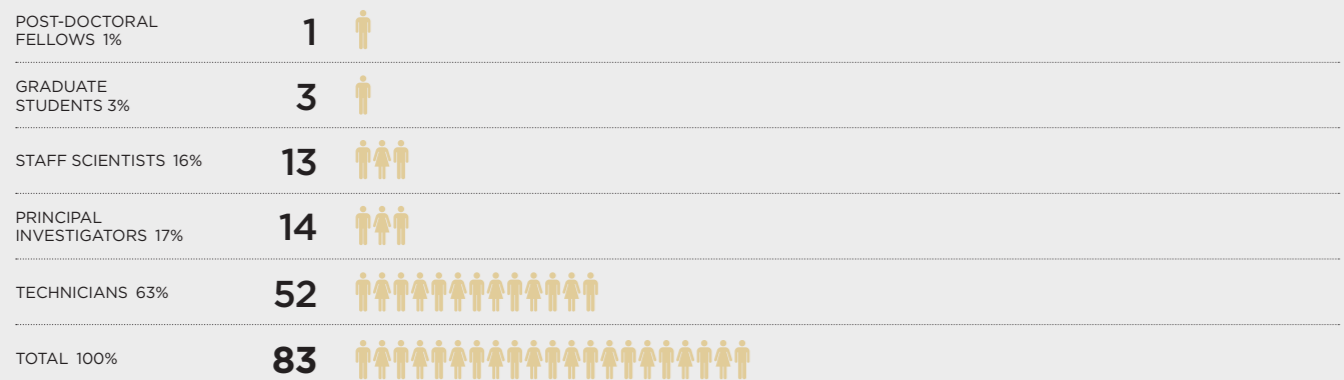
TOTAL SCIENTIFIC PERSONNEL **420**



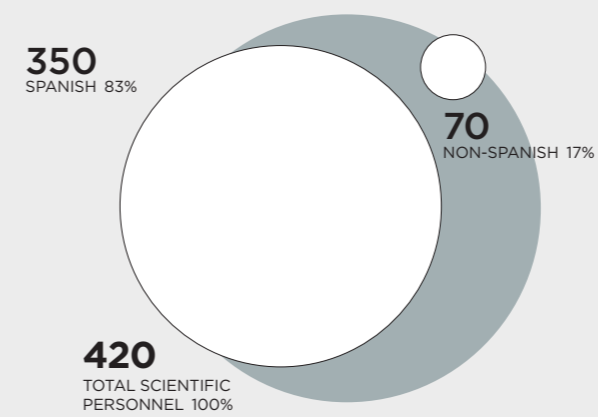
DISTRIBUTION BY PROFESSIONAL CATEGORY IN: TRANSLATIONAL RESEARCH



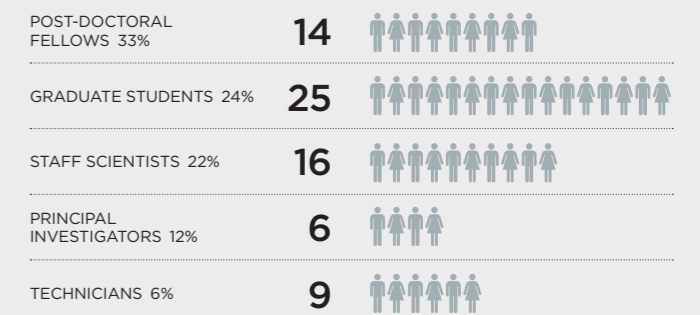
DISTRIBUTION BY PROFESSIONAL CATEGORY IN: INNOVATION



SCIENTIFIC PERSONNEL: NATIONAL ORIGIN



FOREIGN SCIENTIFIC PERSONNEL: DISTRIBUTION BY PROFESSIONAL CATEGORY



Total foreign scientific personnel 70
Percent values represent percentages of foreign employees of the total CNIO personnel in each category

DISTRIBUTION OF SCIENTIFIC PERSONNEL BY NATIONAL ORIGIN

